

OIL & GAS
PRODUCT CATALOG



OIL & GAS SOLUTIONS



Hubbell is your trusted global provider of products for harsh and hazardous environments, offering heavy industrial and explosion-proof equipment engineered to withstand the toughest extremes in the toughest climates.

Innovative | Safe | Reliable

Hubbell's portfolio of brands are bolstered by a legacy of quality, unsurpassed service, and a commitment to innovation that enables agile new product development.

KILLARK



ENGINEERING SOLUTIONS FOR THE OIL & GAS INDUSTRY

- » Oil & Gas Companies
- » EPC Contractors/Engineering Firms
- » Oil Field Services & Companies
- » Safety/IT Directors





Lighting	6
Beacons, Strobe Warning Lights	10
Intercom.....	12
Public Address & General Alarm	14
Telephones	16
Speakers	18
Fire Pump Controllers	20
Electrical Enclosures	22
Conduit Fittings	26
Power Distribution, Temporary Power	28

Motor Controls/Motor Starters	30
Electrical Connectors, Plugs & Receptacles	34
Cable Glands	40
Cable Management	44
Grounding & Bonding	48
Helical Anchors	52
Transformers/Power Quality.....	54
Arresters, Cable Accessories, Insulator	58
Wildlife Mitigation.....	62



Hubbell manufactures a wide variety of lighting products that are perfectly suited for extreme environments. Available in copper-free aluminum, fiberglass reinforced polyester or stainless steel, our lighting fixtures exceed the requirements for areas that are prone to continuous vibration, corrosion or explosions.

LED LIGHTING

KILLARK® KFL-X SERIES LED FLOODLIGHTS

The KFL-X Series LED floodlights are designed with a copper-free aluminum housing and painted with a powder epoxy finish for superior corrosion resistance in harsh and hazardous environments. Killark LED floodlights provide a crisp white light that is great for color rendering. The KFL-X Series floodlights are suitable for marine locations and high ambient areas.



FEATURES

- Global Certifications with Quad Approvals for NEC / CEC / IECEx / ATEX
- Easy Install with clamshell splice box for unimpeded wiring access
- Vast range of optics including spot, wide, and perimeter options available
- Intelligent battery backup with built in self-monitoring and testing
- 5000K color temperature is standard with options for 3000K, Amber, and Green
- Light weight at 25lbs / 11.2kgs

CERTIFICATION

Class I, Div.2, Groups A, B, C, D
 Class II, Div. 1&2, Groups EFG
 Class III
 Marine Rated (US Only)
 Type 3, 4X; IP66
 Zone 2 and Zone 21 Areas
 Ex ec IIC T5/T4 Gc
 Ex tb IIIC T95°C Db, IP66

STANDARD VERSION
 -40°C<Tamb<+65°C<120W
 -40°C<Tamb<+40°C/+55°C >120W

BATTERY BACKUP VERSION
 -20°C<Tamb<+50°C



KILLARK®

VM4L SERIES LOW BAY & HIGH BAY LED FIXTURE



FEATURES

- Wide variety of optics including globes, globes with reflectors, all-glass refractors, spin-top refractors and flat lens
- Traditional Industrial Appearance, Suitability, and Photometric Performance
- VM4L LED housings can be retrofitted to existing VM splice boxes to upgrade from HID sources
- Swing-barrel nut patented tank mounting system

CERTIFICATION

Class I, Division 2, Groups A, B, C, D
 Class I, Zone 2, Groups IIC, IIB, IIA
 Class II, Divisions 1 & 2, Groups E, F, G
 Class III, Divisions 1 & 2
 IECEx Rated Models (VM4L with IEx suffix)
 Ex nA IIC T4, Gc / Ex tb IIC T83°C Db
 Temp -40°C <Ta<+65°C



KILLARK®

VTR SERIES LED RETROFITS



FEATURES

- Easy Retrofit that maintains the certifications of the product
- Energy Savings – High lumens per watt
- Long Life – 99,000+ maintenance free hours to 70% initial lumens
- Ambient suitability -40°C to 55°C up to 121W
- Instant On - Including after power interruption
- 120VAC 60Hz

CERTIFICATION

Class I, Div. 2, Groups A, B, C, D
 Class I, Zone 2, Groups IIC, IIB, IIA
 Class II, Div. 2, Groups F, G
 Class III
 Suitable for wet locations
 Type 3, 4X



LED LIGHTING

KILLARK[®] LAL SERIES LINEAR LED FIXTURE

LAL Series Linear LED fixtures are made of a copper-free aluminum body and use energy efficient LEDs that are suitable for use in harsh and hazardous environments. The LAL Series hold Quad Certification for installation all over the world having NEC, CEC, IECeX, and ATEX certifications.



FEATURES

- Shallow design minimizes profile in work areas with low ceiling heights
- Polycarbonate Lens
- Slot Back Design allows multiple mounting access points across length – slots can also be used with 5/16" or 8mm bolts & nuts
- LALxE models have "built-in" battery backup for 90 minute emergency exit
- Metric openings are available
- Variety of mounting options including swivel brackets, wall, ceiling brackets, or beam clamps
- End Caps each have 2 mounting feet built-in plus a safety strap attachment point

CERTIFICATION

Class I, Division 2, Groups A, B, C, D
 Class I, Zone 2, Groups IIC, IIB, IIA
 Class II, Divisions 1 & 2, Groups E, F, G
 Class III, Divisions 1 & 2
 Zone 2
 Zone 21



Chalmit[®] PROTECTA X LED LINEAR



FEATURES

- 120,000-hour maintenance free lifespan at 25°C
- > 90,000 maintenance free hours at 60°C
- The lumen output of a 4ft linear in a lightweight and slimline package using specialized optics
- A targeted bright, white output with minimal spill light
- Market-leading efficacy of > 135 lm/W
- Up to 50% energy savings vs traditional fluorescent fixtures
- Multiple beam distributions available

CERTIFICATION

Zone 1 & 21
 IP66
 -40°C to +60 °C



Chalmit[®] CURIE ELITE LED



FEATURES

- Fully maintainable with replaceable LED strips and driver
- Resistant to voltage fluctuations
- Highly energy efficient
- B15 SOLAS fire rating
- 120,000 maintenance free hours at 25°C

CERTIFICATION

Zone 1 & 21
 IP65
 -20°C to +45°C



EGRESS LIGHTING

KILLARK[®] VM4L EMERGENCY



FEATURES

- Battery backup versions offer 200 lumen output for 90 minutes
- Intelligent battery backup self-tests and self-monitors to ensure fixture is ready in case of an emergency
- Wide variety of optics including globes, globes with reflectors, all-glass refractors, spin-top refractors and flat lens
- Traditional industrial appearance, suitability, and photometric performance

CERTIFICATION

Class I, Division 2, Groups A, B, C, D Ex nA IIC T4, Gc / Ex tb IIC
 Class I, Zone 2, Groups IIC, IIB, IIA T83°C Db
 Class II, Divisions 1 & 2, Groups E, F, G Tamp -40°C <Ta<+65°C
 Class III, Divisions 1 & 2
 IECEx Rated Models (VM4L with IEx suffix)



Chalmit[®] HDL106 LED FLOODLIGHT



FEATURES

- Modular design allowing up to four interlinked luminaires, each providing a delivered output > 5500lm
- 40% reduction in weight vs typical floodlights
- Low power consumption
- Rugged construction - resistant to vibration
- Crane Damper Bracket Available
- >150,000 maintenance free hours at 25°C (L70)
- Emergency variant also available

CERTIFICATION

Zone 1 & 21
 IP66/67
 -20°C to +50°C



KILLARK[®] EBS SERIES EXPLOSION PROOF LED EMERGENCY BATTERY BACKUP SYSTEM



FEATURES

- LED Heads provide clear crisp illumination at 5000° Kelvin
- LED Head L70 value 100,000 hours for minimal maintenance
- Two head models up to 500% brighter than competitive conventional units
- Enclosure Type 4 (NEMA 4) for wet and harsh locations
- Group B is standard when using EBSHK type heads

CERTIFICATION

Class I, Divisions 1 & 2, Groups C, D
 Class I, Zones 1 & 2, Groups IIB, IIA
 Class II, Divisions 1 & 2, Groups E, F, G
 Class III, Divisions 1 & 2



Chalmit[®] NEXLED EX E LED BULKHEAD



FEATURES

- Highly visible, instant light
- Easy to install and maintain
- Ultra-long life, no re-lamping required
- Over 60,000 hours continuous operation.
- 100% output in emergency mode (up to 3 ours)
- Very low power consumption
- Highly energy efficient
- Rechargeable NiMH batteries with charging indication
- Compatible with UPS systems
- Available with exit sign

CERTIFICATION

IP66/67
 Zone 1 & 21
 -45°C to +55°C



Our lines of warning and signal lights are extremely durable and long lasting. Our products are built to pass all applicable NEC, CEC, IECEx, and ATEX safety requirements and operate in hazardous locations where flammable vapors or combustible dust are present.

With LED, HID, and Xenon configurations, you can find nearly every type of warning and signal light fixture that you are looking for.



BEACONS, STROBE WARNING LIGHTS

KILLARK® ESXA120AA2

The ESX Series Explosion Proof Xenon Strobe is designed for warning and signaling applications. This fixture is made with a cast copper-free aluminum housing and is powder epoxy powder coat painted for extra corrosion resistance, making it suitable for harsh and hazardous environments.



FEATURES

- Electronic component temperature range –40 C to +55 C
- NEC temperature code, T6 (<85°C)
- Flash rate—85 flashes per minute
- Xenon type lamp
- Voltage and amperage: 12-74 VDC: Draws 1.25A avg. @ 12 VDC tapering to 0.2A avg. @ 74 VDC, .75A avg. @ 24 VDC
- 120 VAC (50/60 HZ): Draws 0.30A avg.
- 240 VAC (50/60 HZ): Draws 0.17A avg.
- Power supply output: 13 watts standard 11 watts for 12-74 VDC

CERTIFICATION

Class I, Divisions 1 & 2, Groups C, D
 Class I, Zones 1 & 2, Groups IIB, IIA
 Class II, Divisions 1 & 2, Groups E, F, G
 Class III, Divisions 1 & 2



GAI-TRONICS® EX BEACON

These certified beacons have been designed for use in harsh environmental conditions. The flameproof beacons are suitable for Zone 1, 2, 21 & 22 applications and are ideal for general signalling duties while their robust construction makes installation in the harshest of environments possible.



FEATURES

- Xenon tubes mechanically secured against shock & vibration
- Large termination area
- Ratchet adjustable stainless steel 'U' bracket
- IP66 and IP67
- Marine grade copper free LM6 Aluminium material
- Glass lens & stainless steel guard
- RAL3000 Red colour

CERTIFICATION

Zone 1
 Zone 2
 Zone 21
 Zone 22



Paging and Intercom products made for harsh and hazardous environments using analog, SMART or the latest in IP technologies. When communication is critical, you can rely on our products to deliver.



INTERCOM

GAI-TRONICS® SP2

SP2 is a network-based, distributed-amplifier, serverless paging and intercom system. Combining the simplicity of “press to page, release to party” operation with advanced multicast Voice over Internet Protocol (VoIP) technology, SP2 is capable of providing virtually instant communication in the most demanding of environments. SP2 can be used as a stand-alone system, or can be easily integrated with other IP systems, such as Elemec3 and HUBBCOM™, or legacy analog systems.



FEATURES

- Multicast VoIP technology
- Serverless architecture
- Full duplex communication
- Efficient 30 Watt class D amplifier
- Five party lines
- AC (120/230v), DC (24v), and PoE/PoE+ versions
- Ambient level sensing (ALS)
- Remote terminal unit (RTU) operation for input/output applications
- Remote monitoring options
- One or five paging zones

CERTIFICATION

Class I, Division 1, Groups B, C, D	ATEX II 3 G Ex ic nA IIC T4 Gc
Class II, Division 1, Groups F, G	ATEX II 3 D Ex ic tb IIIC T135°C Dc
Class III, Division 1	IECEX Ex db [ib] IIB + H2 T6 GB
Class I, Division 2, Groups A, B, C, D	IECEX Ex ic nA IIC T4 Gc
Class II, Division 2, Groups F, G	IECEX Ex ic tb IIIC T135°C Dc
Class III, Division 2	CE Mark
ATEX II 2 G Ex db [ib] IIB + H2 T6 Gb	



GAI-TRONICS® RIGCOM STATIONS



FEATURES

- Rugged construction
- Simple push-to-talk hands-free operation
- Master / slave or common talk modes
- Compatible with GAI-TRONICS' EZ Page stations
- AC & DC power options
- Auxillary microphones & footswitch options

CERTIFICATION

Class I Division 1 Groups C&D
 Class I Division 1 Group D
 ATEX - II 2 Ex d IIB T6 Gb, II 2 D Ex tb IIIC T85°C Db IP66
 IECEX - Ex d IIB T6 Gb, Ex tb IIIC T85°C Db IP66
 CE



GAI-TRONICS® ACOUSTIC HOOD



FEATURES

- Stainless steel mounting hardware suited to arduous environments
- -23dB sound absorption
- Fire resistance: BS476 Part 7 Class 2 surface spread of flame
- Acoustic insulation: 50mm tissue faced non hygroscopic tockwool RW3, density 60kg/m3, providing up to 23dB mean noise reduction
- Insulation liner: white perforated polypropylene, 3mm thickness
- Equipment mounting plate (gear plate): 316 (marine) grade stainless steel, 2mm thickness
- Mounting brackets (straps): 316 (marine) grade stainless steel 6mm



Rugged and reliable paging and intercom products that have set the communication standard in the oil & gas industry for over 70 years. Our products are built to last and are available in IP based, SMART and our legacy analog versions.

PUBLIC ADDRESS & GENERAL ALARM

GAI-TRONICS ELEMEC3

Elemec3 (E3) is a network enabled IP Public Address and General Alarm (PA/GA) system designed for life critical installations in the world's toughest industrial communications markets. Using IP technologies to fully utilize end user infrastructure, the Elemec3 high integrity PA/GA systems are commonly used on Oil & Gas Platforms, FPSOs, Power Generation Plants, Refineries, Chemical Plants and industrial facilities worldwide where the safety of all personnel is of primary importance. The equipment is specifically and fundamentally designed for failsafe operation, with extensive system and fault status monitoring for maximum availability at all times. Prioritized paging and emergency broadcasts or alarms may be automatically or manually initiated from any point on the system with system expansion being defined by the user's network.



FEATURES

- IP PAGA system
- Multiple combined single, N+1 and A/B architectures supported on a single network
- Seamless connection to and from VoIP telephones, amplified telephones and paging stations
- Class D intelligent power amplifiers Dual 300W (D600i), Single 550W (D550i) or Single 300W (D300i)
- Prioritized paging and alarm access

CERTIFICATION

- | | |
|-------------------|------------------------|
| System Approvals | Access Panel Approvals |
| ABS Type Approval | ATEX |
| DNV Type Approval | InMetro |
| BV Type Approval | CCC |
| CCC Type Approval | |
| CE | |



GAI-TRONICS ELEMEC3 IP ACCESS PANEL



FEATURES

- Designed to provide high level Elemec3™ Network system access
- IPAP can also be augmented by the deployment of local access panels and/or seamless integration of GAI-TRONICS' SP2 IP intercom stations

GAI-TRONICS ELEMEC3 IS ACCESS PANEL



FEATURES

- Designed to provide high level Elemec3™ Network system access in outdoor environments
- Routine and emergency speech pushbutton operation
- Selection of facility alarms by protective covered pushbuttons
- Selection of page zones by pushbuttons
- Alarm reset pushbutton
- Microphone with either gooseneck/stem or handheld/fist microphone
- PAGA equipment status indicators





Rugged and reliable telephony products that have set the communication standard in the oil & gas industry for over 70 years. Our phones are built to last and are engineered using the latest in IP technology. No matter the application, we have a phone that meets your needs.

TELEPHONES

GAI-TRONICS AUTELDAC6

Auteldac6 (A6) is an ATEX and IECEx Zone 1 & Zone 21 certified VoIP telephone, providing simple network connectivity extending SIP access to hazardous area industrial atmospheres and environmental extremes. User programmable operation means 0 button/hot dial operation without additional models. A6 telephone has a configurable relay output fitted as standard, which may be used for ring strobe activation or PAGA local speaker mute. All Auteldac 6 models have connection for certified headsets. Easy configuration: password protected intuitive web pages held within the telephone can be accessed using a browser to view, monitor and change settings within the telephone.



FEATURES

- IECEx/ATEX Zone 1 VoIP telephone
- II 2 GD certified for gas and dust
- PoE or local power
- Session initiation protocol (SIP)
- Webpage browser configuration
- 18 button keypad
- Operating temperature -40°C/F to +60°C/140°F
- User adjustable output sounder
- User configurable relay output

CERTIFICATION

IEC
 Ex eb ib mb IIC T4 Gb (-40°C ≤ Ta ≤ +60°C)
 Ex ib tb IIIC T135°C Db (-40°C ≤ Ta ≤ +60°C)
 ATEX
 II 2 G DExeb ib mb IIC T4 GbEx ib tb IIIC
 T135°C Db -40°C ≤ Ta ≤ +60°C



GAI-TRONICS COMMANDER

The Commander family of telephones are tough, weather-resistant units built to withstand abuse and environmental extremes; moulded in glass filled polyester to prevent rust and corrosion. It is simple to install with fixings concealed from view giving increased security from vandalism. GAI-TRONICS' VoIP-SIP telephones support Power over Ethernet (PoE) to combine power and connection to LAN or WAN, offering a wealth of additional features including real-time reporting via SNMP, and can be configured by web browser.



FEATURES

- Robust and weather resistant: IP65 steel cord
- Dual purpose design for wall or desk mounting, simple installation
- Molded in glass filled polyester to prevent rust and corrosion
- Real-time reporting via SNMP, and can be configured by web browser





In emergency situations, be assured that your message is broadcast loud and clear with our hazardous area speakers. Available in both IEC and NEC certified versions.

SPEAKERS

GAI-TRONICS HAZARDOUS AREA SPEAKERS

15 watt and 25 watt loudspeakers for use in hazardous rated environments.



FEATURES

- IECEx/ATEX Zone 1
- UL Class I Division 1
- UL Class I Division 2
- 70v and 100v Line In
- NEMA 4X and IP66 Weatherproof Ratings

CERTIFICATION

UL Class I Division 1, Class I Division 2
ATEX/IEC Zone 1



GAI-TRONICS FLUSH-MOUNT SPEAKER

Flush-Mount ceiling speaker with enclosed rear chamber, ABS Construction, easy installation of back box with three mounting hooks; quick "spring clip" wire terminations.



FEATURES

- 8 Ohm, 6W Speaker
- White ABS Grille and Enclosure
- Impedance or XFMR Version Available
- Three-way Easy Connect Terminals
- 50-15000 Hz. Frequency Range
- 90dB SPL @ 1 W, 1 Meter
- Dimensions: 9.5" (232mm) Dia. X 4 3/4" (120mm) D



Providing customers with a turnkey solution to their project requirements, we focus on specification-led design, and product customization to meet the unique needs of every application. We also offer circuit breakers, audible and visual alarm systems, sequencing and alternating function timing devices, and protective components. All of our products are designed to conform to the latest requirements of the NFPA 20, UL 218 and FM 1321/1323.



FIRE PUMP CONTROLLERS



MODEL FD4E CONTROLLER

The Metron Model FD4e controller is designed to specifically meet the latest NFPA 20 and UL 218 standards for Diesel Engine Fire Pump Controllers. This controller implements the latest component and microprocessor logic technology available. It incorporates years of experience in the design and manufacture of fire pump control systems. The components are installed in a NEMA 4 watertight enclosure with optional NEMA 4X ratings available. The Operator Interface Device (OID), manual start pushbuttons, stop push button and Auto-Off-Manual selector switch are located on the exterior door for easy access. The battery disconnect switches are located on the main mounting panel inside the enclosure. 600 PSI rated as standard.



FEATURES

- 3 million event log
- 10 year pressure log
- User settings change log
- Tested to -10 to 50°C ambient
- MODBUS standard
- Power input 95-250 VAC (Three phases available)
- 9 spare programmable inputs
- 10 spare volt-free
- 9 spare programmable indicators
- Fully automatic battery charge

CERTIFICATION

Customized for each order.





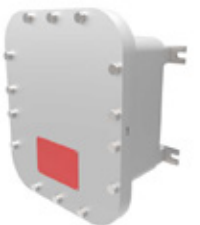
Designed with safety and reliability at the forefront and built to withstand the harshest of environments, our product families are constantly updated to exceed our customers' expectations.

Our enclosure lines encompass instrument housings, junction boxes and terminal boxes as well as a full range of accessories.

ELECTRICAL ENCLOSURES

KILLARK[®] EXBLT SERIES BOLTED ENCLOSURES

The EXBLT series bolted enclosures are for use in locations that are hazardous and corrosive, wet or hose down rated, dusty or dirty, under either severe hot or cold ambient conditions. The EXBLT series is UL / CSA certified for Class I Groups BCD, Class I Zone 1 & 2 IIB+H2, Class II Groups EFG, Class III, Type 4 & 4X. The EXBLTs boxes are made of cast copper-free aluminum, less than 4/10 of 1% copper content. The EXBLTs covers are made from 6061-T6 aluminum plate, also containing less than 4/10 of 1% copper content. The enclosures are supplied standard with a Nitrile (BUNA-N) O-Ring and ductile mounting lugs. The boxes have pre-drilled internal mounting bosses for factory or field installed mounting pans. Options include viewing windows, control operators, rotary handles, circuit breaker handles, NPT conduit openings & metric gland openings.



FEATURES

- High strength, lighter weight, corrosion resistant copper free cast aluminum construction
- Reduced number of cover bolts
- Cover "O"-ring, Nitrile (BUNA-N) material, supplied standard supplied standard for a Type 4 rating
- Mounting lugs are bi-directional, bolt on, made from ductile aluminum alloy
- Back pan mounting holes predrilled

CERTIFICATION

Class I, Groups B,C & D
 Class I, Zone 1, IIB+H2
 Class II, Groups E,F & G
 Class III
 Type 3, 4, 4X
 Ta = -25°C to +60°C (UL)
 Ta = -50°C to +60°C (CSA)

Ex tD A21 IP66 T80°C
 Ta = -20°C to +60°C
 IEC Ex Certificate
 Ex db IIB+H2 Gb
 Ex tb IIIC Db IP66 T85°C
 Ta = -50°C to +70°C

ATEX Certificate
 II 2 G D 2813
 Ex d II+H2 T6



KILLARK[®] USF SERIES TERMINAL ENCLOSURES



FEATURES

- Comes standard in 316 stainless steel
- Also available in 304 stainless steel and carbon steel
- All external hardware is 316 stainless steel
- Gasket is one-piece high temperature closed cell silicone with superior recovery and resealing properties

CERTIFICATION

Class II, Groups E,F & G
 Class III
 Ex tb Zone 21 AEx tb, IIIC
 T80oC/T100oC/T130oCC Db
 Type 3, 4, 4X IP66
 Ta = -50°C to +40°C T6
 Ta = -50°C to +55°C T5
 Ta = -50°C to +90°C T4

Ex ib IIC T6/T5/T4 Gb
 Ex tb IIIC T80oC/T100oC/T130oC
 Db IP66
 Ta = -50°C to +40°C
 Ta = -50°C to +55°C
 Ta = -50°C to +90°C
 Service Temperature -55°C to +135°C

ATEX / IEC Ex Certificate
 II 2 G D 2813
 Ex eb IIC T6/T5/T4 Gb



BURNDY[®] ENCLOSURE, BOX, POLYMER CONCRETE



FEATURES

- Made from Polymer Concrete
- Pre-scored Knockouts offered from the factory
- Different accessories including; cable racks, Unistrut, pulleys, knockouts, coiling brackets, and terminators
- EZ locate system allowing ground wires/bonding harnesses or tracer wires to be quickly isolated from the grounding electrode
- Optional Tamper-Resistant penta-head cover bolts
- Full range offering Tier 5, 8, 15, & 22

CERTIFICATION

UL Listed
 ANSI/SCTE 77 2007



ELECTRICAL ENCLOSURES

HAWKE International EXE EASY ACCESS

The Exe Easy Access range is designed for fast installation and easy inspection in Exe environments. Our most innovative enclosure range yet, the EA's radical sloped face design provides unmatched corrosion resistance and meets the highest demands for water and dustproof requirements. Its radical sloped face design and cut away sides allow for easier installation and maintenance than ever before.



FEATURES

- Enclosure Box size: 332 mm X 317 mm
- The EA's innovative sloped lid design allows corrosion causing contaminants to naturally spill off
- All 9 EA sizes follow industry sizes, so you can easily switch out or retrofit your current Enclosure for our EA range
- The removable hinged lid prevents the lid from being dropped from height
- Turned out sealing face means spanner can be brought into the enclosure parallel with gland locknuts allowing for an easier installation

CERTIFICATION

- Zone 1
- Zone 2
- Zone 21
- Zone 22



HAWKE International PL5

Molded from Glass Reinforced Plastic rather than traditional Glass Reinforced Polyester, the PL5 Enclosure range offers incredible GRP strength at 50% less weight for easier, faster installation.



FEATURES

- Dropped Lid Body Design enables finger access for easy wiring and inspection of terminations.
- External Mounting Feet eliminates the need to remove the lid when mounting the enclosure on the wall.
- Earth Continuity Plate is Zintec or Brass
- One Piece Durable Captive Silicone Gasket provides Ingress Protection IP66 and IP67 to IEC/EN 60529, optimum performance at low and high temperature extremes.
- Corrosion Resistant Stainless-Steel Lid Fixing Screws with Nylon Retaining

CERTIFICATION

- Zone 1
- Zone 2
- Zone 21
- Zone 22



ELECTRICAL ENCLOSURES

KILLARK HKBX-GLC

Instrumentation housed in HKBX Series enclosures typically used to measure, detect, monitor, transmit, and control industrial processes and systems.



FEATURES

- Compact round body instrument enclosures with threaded glass lens screw covers provide easy access to interior
- High strength, lighter weight, corrosion-resistant copper free cast aluminum construction
- Glass lens made of tempered soda lime
- Cover o-ring, Nitrile (BUNA-N) material, supplied standard
- supplied standard for a Type 4X rating

CERTIFICATION

- Class I, Groups B,C,D
- Class I, Zones 1&2, Groups IIB+H2
- Class II Groups E,F,G
- Class III, Type 4 & 4X
- Ex db IIC
- Ex e IIC
- Ex tb IIC
- IP66



KILLARK GRB-275L

GRB-275L



FEATURES

- Compact rectangular enclosures with threaded lens covers, provides view of the interior
- High strength, lighter weight, corrosion resistant copper free cast aluminum construction and tempered soda lime glass, cemented in place
- Cover o-ring, Nitrile (BUNA-N) material, supplied standard
- supplied standard for a Type 4X rating
- Cast mounting lugs are standard on all boxes

CERTIFICATION

Class I, II, III B,C,D,E,F,G



KILLARK B7EQ

B7EQ



FEATURES

- High strength, lighter weight, corrosion-resistant copper free cast aluminum construction
- Cover bolts of 316 grade stainless steel for maximum protection from corrosion
- Cover o-ring, Nitrile (BUNA-N) material, supplied standard for a Type 4X rating
- Mounting lugs are bolt on, made from ductile aluminum alloy

CERTIFICATION

4x Rating





Our comprehensive selection of products includes aluminum and iron conduit bodies, unions, seal fittings and other affiliated products. We proudly stand by our superior corrosion-resistant fittings for the harshest applications.

CONDUIT FITTINGS

KILLARK[®] TET STYLE CONDUIT BODY



FEATURES

- Safer to Install for future access during maintenance
- Pull through for non-related products
- Future Proof –unable to block during expansion projects
- cULus certified and Type 4X approved
- Includes stainless steel cover and neoprene gasket
- Tapped drain/breather hole available

CERTIFICATION

cULus certified
Suitable for use in Class I, Div. 2 applications when installed in accordance to the NEC 501.
Type 4X

KILLARK[®] ENY



FEATURES

- Copper-free Aluminum
- Electrostatically applied powder coating
- Tri-Coat finish of electrozinc, chromate sealant, and powder paint
- Sizes from 1/2 to 2 inch

CERTIFICATION

Class I, Divisions 1 & 2, Groups A, B, C, D
Class I, Zones 1 & 2, Groups IIC, IIB, IIA
Class II, Divisions 1 & 2, Groups E, F, G
Class III, Divisions 1 & 2



KILLARK[®] KQS



FEATURES

- 250ml cartridge comes in a single barrel with a 2 chamber internal compartment that allows for more compact storing and use
- Two part epoxy resin is pushed through a patented static mixing wedge
- Each cartridge comes with 4 patented static mixing nozzles to form a perfect mix
- Cartridge dispensing guns and spare nozzles are available as ordering options

CERTIFICATION

cULus certified
Suitable for use in Class I, Div. 2 applications when installed in accordance to the NEC 501.
Type 4X

KILLARK[®] GEC



FEATURES

- Water shedding cover – suitable for wet locations when mounted in upright position.
- External cover threads on body protecting conductors from damage during pulling.
- No pinching of conductors during cover installation.
- Taper threaded hubs to provide ground continuity

CERTIFICATION

Class I, Divisions 1 & 2, Groups C, D
Class I, Zones 1 & 2, Groups IIB, IIA
Class II, Divisions 1 & 2, Groups E, F, G
Class III, Divisions 1 & 2



Our temporary power solutions use cutting-edge technology to give you exactly what you need to exceed your expectations and meet NEC/IEC standards.



POWER DISTRIBUTION, TEMPORARY POWER

KILLARK® VERSAMATE

VersaMate® metallic pin & sleeve plugs, receptacles, and in-line connectors are designed for heavy duty industrial use. These devices supply power to both fixed and portable electrical equipment including pumps, generators, welders, vacuums, blowers and similar apparatus. Suitable for indoor and outdoor use, as well as applications that include wet, cold, hosedown, hazardous and corrosive environments. Configurations are also available in reverse-service and polarized orientations.



FEATURES

- Patented “Breach-Lock” cap serves as both flip lid and screw cover
- Patented notch in cap arm holds cap open for easy plug insertion or maintenance
- Type 4X rating when inserted into VersaMate receptacle and locking ring is tightened. Patented pin design uses slotted spring clip which avoids excessive wear while providing continuous electrical pin to sleeve contact
- “Increased Safety” type box terminals with gripper ribs securely clamp around conductors

CERTIFICATION

Up to 200A; Up to 600VAC/250VDC;
50-400 Hertz



KILLARK® B7L SERIES PANELBOARD

Killark B7L Series of Hazardous Location Lighting Panelboards provide overcurrent and short circuit protection of service entrance, feeder or branch circuits, lighting, heating, appliance and motor circuits. Rated for indoor and outdoor applications, the copper-free aluminum construction is ideal for harsh and hazardous environments. Circuit breaker configurations are available with various Eaton (Cutler Hammer) breakers.



FEATURES

- NEMA 4, 4x rated for protection from hose directed water and corrosion
- Standard electrical components: B7LCutler-Hammer Quicklag Breakers B7PCutler-Hammer Series C Breakers
- B7L and B7P furnished with copper buss
- Main lugs. Mechanical solderless type, approved for CU or AL conductors
- Solid Neutral standard. Single phase 3 wire. Three phase 4 wire
- Copper ground bar standard
- Main and branch breaker handles can be padlocked in “ON” or “OFF” position

CERTIFICATION

Class I, Div. 1 & 2, Groups B, C, D Class I, Zones 1 & 2, Groups IIB+H2, IIA Class II, Div. 1 & 2, Groups E, F, G Class III, Div. 1 & 2 NEMA 3, 4, 4x, 7 (B, C, D) 9 (E, F, G)



Explosion proof, dust-ignition proof fused and non-fused starters that are suitable for world-wide applications provide protection in areas where hazardous materials are developed, handled and stored.

MOTOR CONTROLS, MOTOR STARTERS

KILLARK[®] EXB70

The EXB70 Series of across-the-line starter and combination motor control centers utilize SSNR (single speed non-reversing) IEC starters. The EXB70 starters is for use in locations made hazardous due to the presence of flammable gasses or vapors, combustible dust, or easily ignitable fibers and flyings, and areas which are subject to corrosion, weather and dampness.



FEATURES

- Copper free cast aluminum construction. High in strength, lighter in weight, corrosion resistant
- Stainless steel metric cover bolts
- Cover o-ring supplied as standard for TYPE 4X and IP66 applications
- Starters supplied with hinged covers as standard
- Bi-directional bolt on mounting lugs made from a ductile aluminum alloy which will adjust to irregular surfaces without causing damage to the casting
- Starter only supplied as standard with a manual reset button and two future control operator openings with plugs

CERTIFICATION

Class I, Groups B,C & D
Class I, Zone 1, IIB+H2
Class II, Groups E,F & G
Class III
Type 3, 4, 4X
Ta = 0°C to +50°C (UL & CSA)

IEC Ex Certificate
Ex db IIB+H2 Gb
Ex tb IIIC Db IP66 T85oC
Ta = 0°C to +50°C

ATEX Certificate
II 2 G D
Ex d II+H2 T6
Ex tD A21 IP66 T80oC
Ta = 0°C to +50°C



KILLARK[®] B7MS

Killark's B7MS Series of Hazardous Location Manual Motor Starters provide non-reversing manual starting and stopping of motor loads. Rated for indoor and outdoor applications, the copper-free aluminum construction is ideal for harsh and hazardous environments. Available with either "Push-Button" or "Rotary" style operators, the internal IEC-style starter is available in manufacturer configurations including Square D and ABB. Note: Overload Heaters are required, but not included as standard, and need to be specified based on FLA (Full Load Amps) of motor.



FEATURES

- Compact size enclosures provide application flexibility with cost savings over industry standard sizes
- Type 4, 4X rated for protection from hose directed water and corrosion
- Pre-drilled to facilitate easy field installation of starters.
- Either rotary or push-button operator with included lock-out provision
- Provisions for drain and breather

CERTIFICATION

Class I, Groups B,C & D
Class I Zone 1 IIB+H2 Gb
Class II, Groups E,F & G
Class III
Type 3, 4, 4X
Ta = -25°C to +40°C (CSAus)
Ta = -50°C to +40°C (cCSA)



MOTOR CONTROLS, MOTOR STARTERS

POWEROHM RESISTORS Type BG Dynamic Braking Modules

Powerohm Type BG Brake Modules are designed to handle the harsh requirements of full power braking for high horsepower AC Drives. The module monitors the DC bus of a VFD and if overvoltage occurs, shunts the excess energy through a braking resistor to prevent overvoltage faults. This permits controlled braking and dramatically shortens motor stopping time. Advanced diagnostic and communication options allow remote monitoring and flexibility to your automation system.



FEATURES

- Voltage ratings range from 208 to 720 VAC.
- Continuous current ratings up to 1200 Amps.
- Peak current ratings as high as 1800 Amps.
- Common mode noise filtration.
- Instantaneous bus over and under voltage detection.
- Electronic short circuit protection.
- Ethernet, profibus, and mod-bus communications available

CERTIFICATION

cUL (US)
UL
CE



MOTOR CONTROLS, MOTOR STARTERS

KILLARK HKH HAZCON™ SERIES CONTROL STATIONS

Killark HKH HAZCON™ Series Control Stations provide control solutions in hazardous location areas to supply; START/STOP Motor Functions, LED Pilot Light Indications, ON/OFF functions for Lighting Circuits and more. Utilized in Class 1 Division 2, Class 1 Zone 1 areas where Type 3, 4, 4X, 12 and 13 weather-ingress ratings are required for indoor and outdoor use. Certified for use in the European Union with ratings for IECEx and ATEX in addition to IP66 water ingress protection.



FEATURES

- Size 1 Control Stations available as 1a, 1b, & 1c as standard catalog number offerings for 1, 2 & 3 device openings and will accept 2-M20 entries in either end
- Ammeters available in 1b & 1c
- Size 2 Enclosures available as 2a & 2c for 2, 4 & 6 device entries in cover with ability to accept 2-M25 entries in either end
- Operating Temperature of -50°C to +60°C

CERTIFICATION

Class I, Division 2, Groups A, B, C, D
Class II, Division 1, Groups E, F, G (Canada Only)
Class II, Division 2, Groups E, F, G
Class III, Divisions 1 & 2
Zones 1 & 2
Zones 21 & 22



POWEROHM RESISTORS Type HRG High Resistance Grounding Systems

Powerohm Type HRG High Resistance Grounding Systems are designed to protect and monitor the ground input of a three-phase AC Power System. The HRG incorporates a grounding resistor to limit ground-to-neutral faults and a wide array of monitoring and signaling options to alert of the faulted condition. The HRG permits continued operation of a single-phase fault system and works as a tool to efficiently locate the ground fault. Powerohm HRG Systems are available with both Digital and Analog controls.



FEATURES

- Three-phase system protection in refineries or generated power systems.
- Reduces the magnitude of transient over-voltages during switching of a grounded circuit.
- Provides ground fault detection warning through a Large array of signaling options.
- Simplifies and expedites the location of a ground fault by use of a portable current detector.
- Allows system to run with a single line fault to schedule shut down and maintenance.
- Incorporates circuit isolation and alarm schemes to reduce hazards to maintenance personnel.

CERTIFICATION

UL
CSA



KILLARK GZ SERIES OPERATORS



FEATURES

- Operators are all aluminum except for certain movable parts which are stainless steel
- All other parts such as screws are either stainless steel or plated steel
- Threaded bodies are all 3/4"-14 NPSM thread and M22x1.5 on request
- Control operators can be grouped into a single assembly thus reducing installation time and cost

CERTIFICATION

Class I, Divisions 1 & 2, Groups B, C, D
Class II, Divisions 1 & 2, Groups E, F, G
Class III, Divisions 1 & 2
Zones 1 & 2
Zones 21 & 22
II 2 G Ex db IIC/II B+H2Gb
II 2 D Ex tb IIIC Db



KILLARK SEAL-X SERIES FACTORY SEALED CONTROL STATIONS



FEATURES

- Eliminates external sealing requirements.
- Lower installation cost
- NEMA 3 weatherproof
- Color coded wiring with more wiring space for easier field installation
- Stainless steel captive screws for cover assembly
- Lockout accessory available must be factory installed
- Ground boss for grounding in the splicebox
- Device bodies and covers are copper-free cast aluminum alloy

CERTIFICATION

Class I, Divisions 1 & 2, Groups C, D
Class I, Zones 1 & 2, Groups IIB, IIA
Class II, Divisions 1 & 2, Groups E, F, G
Class III, Divisions 1 & 2





We manufacture connectors for power generation, distribution, grounding, motor connections and every other electrical application found in an oil and gas facility. No matter the application, all Hubbell connector products are engineered to stand up to the harsh conditions found in production, petroleum refining and petrochemical processing operations - ensuring continued safety, reliability and efficiency.

ELECTRICAL CONNECTORS

RIGPOWER RMP11 SERIES

RMP11 Series High Amperage Single Pole Power connectors are designed to allow for installation in extreme temperatures (-40°C to +55°C) at full load. The RMP11 Series is rated for up to 1135 Amps continuous current at 1,000 VAC/VDC, and allows for usage of cable sizes ranging from 4/0 to 777 DLO. The RMP11 Series is available in a wide range of styles and is stocked in ten colors to provide correct phase identification.



FEATURES

- Thermoset rubber plugs and rubber coated aluminum shells are resistant to salt corrosion, drilling mud, humidity, moisture, oil and dust
- Color Coding Option for phase identification.
- Heavy-Duty ACME Threaded Coupling permits quick engagement under harsh conditions
- Dead front tip on male contact improves safety by eliminating exposed & live surfaces

CERTIFICATION

UL 486A-486B



HAWKE POWEREX

The PowerEx range of connectors have been designed specifically for the extremely demanding requirements of higher power applications. Inserts are available with 1 to 4 contacts with a conductor acceptance range of between 50mm² and 630mm² operating up to 780A and 750V as standard. Other voltages available on special request.



FEATURES

- Designed for the demanding requirements of higher power applications. Up to 780A and 750V as standard, other voltages are available on request. Running Coupler - Allows the connector to be installed onto a pre-assembled cable gland
- Keying Position - The unique visual 5 position insert keying system along with the integral machined keyway prevents contact damage and ensures safe use by eliminating the possibility of misconnection of adjacent circuits.
- Internal Earth - Internal earth fitted as standard. Sized to suit cables earthing facility

CERTIFICATION

ATEX
IEC
EAC
INMETRO
NEC
Tamb: -40°C to +60°C.
II2 GD Exdb IIC Gb, Extb IIC Db T85 IP66, 67 & DTS01 deluge protected
Certificate No's Baseefa06ATEX0062X and IECEx BAS 06.0019X



ELECTRICAL CONNECTORS

HAWKE INTERNATIONAL INSTRUMEX

The InstrumEx design allows the live mate and de-mating of signal and low power in hazardous areas safely and quickly. This connector is available in 4, 8 and 9 way configurations, up to 2.5mm contacts and allows for a maximum of 250V, 10A. Made from brass nickel plated or stainless steel material it includes an integral cable glands which not only make the connector smaller it also allows it to be cheaper than its competitors while still maintaining the durability required in hazardous area applications.



FEATURES

- Allows the live mating and de-mating of signal and low power in hazardous areas.
- Pre-Terminated; Electrical insert with key - easy to assemble electrical insert allows crimped or soldered connections
- Integral Keying - Machined key and keyway ensures connector alignment. Unique 5 position insert keying system prevents cross-mating
- Quick Connect - Unique 4 start ACME thread offers a smooth and quick fully mating action in less than two turns. Earth continuity is achieved via a 360° contact clip

CERTIFICATION

ATEX IEC EAC INMETRO NEC
 Tamb: -40°C to +60°C
 I12 GD Exdbe IIC Gb Extb IIIC Db T85
 IP66, 67 &
 DTS01 deluge protected.
 Certificate No's Baseefa06ATEX0061X
 and IECEx BAS 06.0018X



HAWKE INTERNATIONAL CONTROLEX

The ControlEx range, suitable for control and low/medium power applications, it's our most versatile option. With a wide range of insert configurations and rated up to 3KV in some cases this connector allows Hawke to tailor a connector solution to the customer's needs. The robust stainless steel body can hold up to 60 contacts and will accept conductor sizes ranging between 0.5mm² and 35mm², operating up to 125A and 750V.



FEATURES

- Ideal for use in control and low/medium power applications
- Easily Field wireable - Pin and socket inserts are front and back to assist wiring and avoid termination errors; Internal Keyway Spacer - Eases accessibility for termination
- Locking Pin - Optional locking pin provides the facility for mated connectors to be permanently locked; Keying Position - Eliminates the possibility of misconnection of adjacent circuits.
- Running Coupler - Allows the connector to be installed onto a pre-assembled cable gland

CERTIFICATION

ATEX IEC EAC INMETRO NEC
 Tamb: -40°C to +60°C
 I12 GD Exdb IIC Gb, Extb IIIC Db T95 IP66, 67 &
 DTS01 deluge protected
 Certificate No's Baseefa12ATEX0014X & IECEx BAS 12.0006X



ELECTRICAL CONNECTORS

HAWKE INTERNATIONAL FIBREX CONNECTOR

In a digital age, one need is clear - the need to process ever-increasing amounts of data at lightning-fast speeds. Fibre optics has long catered for this need in commercial applications but, until now, fibre technology has posed serious ignition risk in hazardous areas. The Fibre Ex range combines Hawke's extensive experience in hazardous environments with specialist knowledge of Fibre Optic technology to safely bring power of Fibre Technology to Ex environments.



FEATURES

- Certified to the latest BS EN 60079-28 Optical Radiation Standard
- Ideal for providing ultra-high bandwidths and sensing for some of the world's harshest environments
- Keyed Positions for the prevention of pin damage
- All BR Connectors Supplied pre-terminated
- Our unique 4 start ACME thread offers a smooth and quick fully mating action in less than two turns for fast and simple installation
- Easy to install and inspect
- Profiled spigot and connector body prevent cable rotation eliminate cable damage
- Termination Service Available from Acal BFi on request
- Fibre Technology - Available in both single and multimode option in 4 and 8 way configurations

CERTIFICATION

Ex op pr
 Ex [dbe] op pr - for bulkhead/ box head mount version
 Ex op is - with separately certified 'op is' source
 IP66
 IP67



PLUGS & RECEPTACLES

KILLARK® VSQ

Killark VersaMate® VSQ Series of Switched and Interlocked receptacles provides for a receptacle solution in hazardous location areas. NEMA 4X weather-ingress ratings allow for indoor and outdoor use, and copper-free aluminum construction with electrostatically applied polyester/epoxy coating ensure the ultimate in corrosive resistance. Plug Interlock Mechanism for Dead-Front construction, ensuring that the switch cannot be turned on without a fully inserted plug (plug cannot be removed with switch in "ON" position, preventing possibly damaging arcs and sparks).



FEATURES

- Compact size and footprint
- Plug Interlock Mechanism for Dead-Front construction
- Switch cannot be turned "ON" without fully inserted plug
- Plug cannot be removed with switch in "ON" position
- Factory Wired Receptacle (Load Side)
- "Off" position is padlockable for maintenance safety
- Auxiliary Contact (late-make early-break) rated 10 Amp, 1/3 HP at 125/250 VAC.
- Adjustable mounting lugs

CERTIFICATION

Class I, Divisions 1 & 2, Groups B, C, D
Class I, Zones 1 & 2, Groups IIB+H2, IIA
Class II, Divisions 1 & 2, Groups F, G
Class III, Divisions 1 & 2



PLUGS & RECEPTACLES

KILLARK® ACCEPTOR

The ACCEPTOR® UGP-QW / UGR-QW Plug and Receptacle system, with its unique patented design, is interchangeable with other NEMA bladed type explosion-proof and dust ignition proof devices. Plugs and receptacles may be used where bladed devices are needed in locations made hazardous by the presence of flammable gasses or vapors, combustible dusts or easily ignitable fibers and flyings. Quick-Wire terminal construction allows for easier installation than traditional methods, allowing for labor savings and increased customer satisfaction. Plug can serve to provide power for portable equipment used in both hazardous and non-hazardous areas. Factory sealed construction specifies that no additional external seals are required (except in Group B applications).



FEATURES

- Factory sealed chamber in UGR receptacle contains switch's arcing components
- Its ACCEPTOR® plugs conform to NEMA configurations, while its "turn-to-engage" feature locks in plug and can be used to prevent accidental disengagement of critical equipment
- Spring loaded receptacle cover closes when plug is removed.
- Copper-free aluminum (less than 4/10 of 1%) alloy resists corrosion

CERTIFICATION

Class I, Divisions 1 & 2, Groups C, D
Class I, Zones 1 & 2, Groups IIB, IIA
Class II, Divisions 1 & 2, Groups F, G
Class III, Divisions 1 & 2



Vantage Technology XP STARLINE

Vantage XP (Explosionproof) Star-Line Victory Series Power connectors, offered in 6061-T6 Hard Anodized Aluminum or Aluminum Nickel Bronze hardware, were designed and tested to make and break live circuits within Division 1 and Zone 1 hazardous (classified) locations worldwide. Inserts available with 2 Pole 3 Wire, 3 Pole 4 Wire, 4 Pole 5 Wire or 3 Pole 4 Wire + 2 Relay contact configurations in 30/32, 60/63, 100/125 and 200/260 circuit-breaking / non-circuit breaking amperages, 480 / 600 / 1000 AC and 250 DC Voltage at 50 / 60 or 400Hz Frequencies.



FEATURES

- Power Inserts: 30 to 260 amp rated for service through 600VAC
- Control Inserts: Up to 100 pin configurations, 5 to 20 amp rated
- Circuit-Breaking: UL and CSA Listed to make/break at full rated load
- Factory Sealing Junction box, NPT and panel-mounted receptacles are pre-wired and factory sealed. No external seals are required.

CERTIFICATION

Class I, Div. 1 & 2, Groups C & D Circuit-Breaking; Class I, Div 1 & 2, Groups B, C & D; Class II, Div.1, Groups F & G at 600VAC, 60/400 Hz, Circuit-Breaking; AEx d IIC T6; II 2 GD Ex d IIC IP 66/67 T 70°C; 1000VAC, 500VDC



KILLARK® VBQ

Killark VersaMate® VBQ Series of Switched and Interlocked receptacles provides for a receptacle solution in hazardous location areas. NEMA 4X weather-ingress ratings allow for indoor and outdoor use, and copper-free aluminum construction with electrostatically applied polyester/epoxy coating ensure the ultimate in corrosive resistance. Plug Interlock Mechanism for Dead-Front construction, ensuring that the switch cannot be turned on without a fully inserted plug (plug cannot be removed with switch in "ON" position, preventing possibly damaging arcs and sparks). Integral circuit breaker allows for local circuit protection (Square D and Cutler-Hammer options available).



FEATURES

- Plug Interlock Mechanism for Dead-Front construction. Switch cannot be turned "ON" without fully inserted plug. Plug cannot be removed with switch in "ON" position
- Ground Fault Options Available
- Spacious wiring room that meets NEC wire bending requirements.
- Adjustable mounting lugs
- Quick release cover bolts with triple leads for faster removal
- Electrostatically applied polyester/epoxy finish

CERTIFICATION

Class I, Division 2, Groups B, C, D
Class I, Zone 2, Groups IIB+H2, IIA
Class II, Divisions 1 & 2, Groups F, G
Class III, Divisions 1 & 2



Our cable glands are engineered to be extremely robust without compromising the ease of installation or safety. We have a proud heritage of over 60 years of manufacturing cable glands for industrial and hazardous areas.

All of our glands are waterproof and are available in a variety of different materials such as brass and stainless steel. Additionally, we have a range of different types of cable glands that meet the specific needs of the oil & gas industry.

CABLE GLANDS

HAWKE International 501/453/UNIVERSAL CABLE GLAND

The 501/453/Universal Cable Gland is dual certified Exe/Exd, robust and for use with single wire armour 'W', wire braid 'X', steel tape armour 'Z', elastomer and plastic insulated cables. For particular use with cables that exhibit 'Cold Flow' characteristics.



FEATURES

- Inspectable Deluge Seal - Offering IP66, IP67, IP68 & IP69 ingress protection
- Passive diaphragm seal - Suitable for cables exhibiting 'Cold Flow.' Fully inspectable
- Reversible Armor Clamp - For all types of armor and braid
- Patented Cable Gland Tightening Guide - Helps prevent damage caused by over tightening

CERTIFICATION

Suitable for use in Zone 1, Zone 2, Zone 21 and Zone 22
IP66, IP67 IP68 (30 meters for 7 days) and IP69 to IEC/EN 60529 and NEMA 4X
-60°C to +80 °C



KILLARK

MCX 90 AND 45 DEGREE ALUMINUM CABLE CONNECTOR SERIES



FEATURES

- 360° armor grounding spring is reusable
- Provides a barrier seal between the individual insulated cores within the cable
- Eliminates the use of excess parts. like pulling elbows, to get to desire 90° bend
- Provides a cable retention and low smoke fume, zero halogen seal onto the cables outer sheath

CERTIFICATION

Class I, Divisions 1 & 2, Groups A, B, C, D
Class II, Divisions 1 & 2, Groups E, F, G
Class III, Divisions 1 & 2
Class I, Zones 1 & 2, Groups IIC, IIB, IIA
Zone 20



KILLARK MC2X



FEATURES

- Red anodized back-nut with hand grip tightening mechanism for ease of installation
- 360° stainless steel reusable ground spring
- Allows for Hawke Express & CELOX's self-mixing two-part epoxy resin for fast curing barrier seal to reduce cable installation time
- Patent pending damming solution for superior barrier seal
- Copper-free aluminum construction for harsh and corrosive atmospheres

CERTIFICATION

Class I, Div. 1 & 2, Groups A, B, C, D
Class II, Div. 1 & 2, Groups E, F, G
Class III
Class I, Zone 1, Groups IIC, Zone 20
Type 3, 4, 4X, 6, IP66, IPX8 6ft/1hr
-50°C to 60°C



CABLE GLANDS

HAWKE International ICG/653/UNIVERSAL

Dual certified Exe/Exd barrier gland, providing a seal around individual cable cores, especially for cables that exhibit "cold flow" characteristics, are not effectively filled or have hygroscopic fillers. For use with single wire armour 'W', wire braid 'X', steel tape armour 'Z' elastomer and plastic insulated cables. The ICG/653/UNIVERSAL is available with either ExPress liquid barrier resin or QSP 2-part hand mix compound, both with a cure time of 30 minutes



FEATURES

- Inspectable Deluge Seal - Offering IP66, IP67, IP68 & IP69 Ingress Protection
- Transparent Elastomeric Fully Inspectable Compound Pot – compatible with both injectable resin and 2-part compound
- Reversible Armor Clamp - For all types of armor and braid
- Patented Cable Gland Tightening Guide - Helps prevent damage caused by over tightening
- Unique Rear Seal - Offering ultimate sealing over an extremely wide cable acceptance range
- Suitable for installation on both armored and non-armored cable

CERTIFICATION

Suitable for use in
Zone 1,
Zone 2,
Zone 21,
Zone 22
Gas Groups IIA, IIB and IIC.
Class 1 Division 2 Groups ABCD,
Class II Division 2 Groups EFG,
Class III
-60°C to +80 °C
NEMA 4X



CABLE GLANDS

HAWKE International 153/X CABLE GLAND

The 153/X Cable Gland is a general purpose cable gland for use with wire braid 'X', elastomer and plastic insulated cables. The gland provides an elastomeric seal on the cable inner sheath, and a low smoke, zero halogen IP and retention seal onto the cable outer sheath.



FEATURES

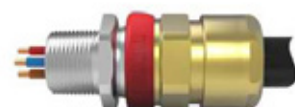
- Elastomeric Exd flameproof seal on cable inner sheath
- Fully Inspectable Armour Clamp - For 'W' wire braid
- Patented Cable Gland Tightening Guide - Helps prevent damage caused by over tightening
- Unique Rear Seal - Offering ultimate sealing over an extremely wide cable acceptance range

CERTIFICATION

DTS01
UL listed for use in wet locations
IP66, IP67 & IP68
NEMA 4X
-50°C to +60 °C



HAWKE International 710 NEC CABLE GLAND



FEATURES

- Inspectable Deluge Seal - Offering IP66, IP67, IP68 & IP69 Ingress Protection
- Transparent Elastomeric Fully Inspectable Compound Pot – compatible with both injectable resin and 2 part compound
- Patented Cable Gland Tightening Guide - Helps prevent damage caused by over tightening
- Unique Rear Seal - Offering ultimate sealing over an extremely wide cable acceptance range.

CERTIFICATION

Suitable for use in Zone 1, Zone 2, Zone 21, Zone 22 and in Gas Groups IIA, IIB and IIC. For use with cable type TC-ER-HL Class I, Groups A, B, C and D (up to 1"). TC-ER, PLTC, PLTC-ER, ITC, ITC-HL or ITC-ER Class I, Division 2, Groups A, B, C and D Class II, Division 2, Groups F and G Class III Hazardous Locations For use with cable type NEMA 4X
-50°C to +80°C



HAWKE International

GLAND MOUNTED CLAMP (GMC)



FEATURES

- Can be fitted to old or new Hawke cable gland designs
- 3-part design allowing retrospective fitting
- Supplied with unarmored and armored options
- Offers clamping solution in accordance with BS EN 60079-14 10.3
- Captive fittings for easy installation

HAWKE International 753 CABLE GLAND

Dual certified Exe/Exd barrier gland, providing a seal around individual cable cores, especially for cables that exhibit "cold flow" characteristics, are not effectively filled or have hygroscopic fillers. For use with braid armored marine shipboard jacketed or non-jacketed cables.



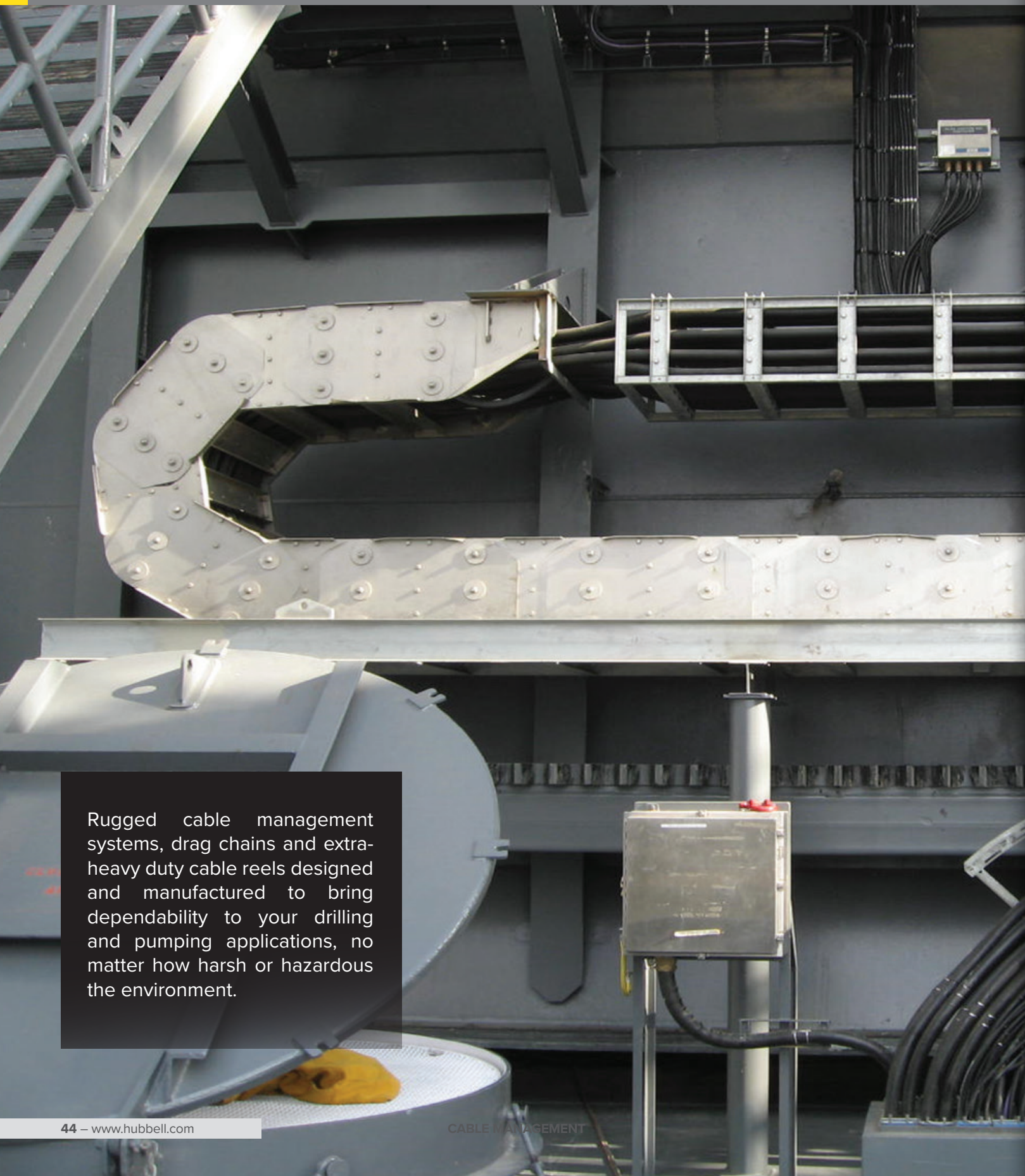
FEATURES

- World's only NEC Certified Transparent Elastomeric Fully Inspectable Compound Pot – compatible with both injectable resin and 2 part compound
- Reversible Armour Clamp - For all types of armour and braid
- Patented Cable Gland Tightening Guide - Helps prevent damage caused by over tightening
- Unique Rear Seal - Offering ultimate sealing over an extremely wide cable acceptance range

CERTIFICATION

IP66, IP67, IP68 & IP69 Ingress Protection
Class I Div 1 ABCD, Class II Div 1 EFG and Class III Class I Div 2 ABCD, Class II Div 2 FG and Class III Div 2 Class I, Zone I, AEx d IIC; AEx e IIC; Zone 21, AEx tb IIIC CEC
Class Class I Div 1 ABCD, Class II Div 1 EFG and Class III Class I Div 2 ABCD, Class II Div 2 FG and Class III Div 2 Ex db IIC Gb; Ex eb IIC Gb; Ex tb IIIC Db
NEMA 4X
-50°C to +80 °C





Rugged cable management systems, drag chains and extra-heavy duty cable reels designed and manufactured to bring dependability to your drilling and pumping applications, no matter how harsh or hazardous the environment.

CABLE MANAGEMENT

BURNDY UNIRAP

Fabricated from one piece nylon that offers high tensile strength while being chemically resistant to solvents, alkalis, oils, grease, and diluted acids. The self-locking feature secures the unused extra length of the tie without twisting or leaving sharp projections.



FEATURES

- Available with stainless steel barb
- Body of the tie wrap comes in either black or natural
- Smooth, rounded edges help ensure safe and efficient handling
- Ergonomically designed installation tools consistently tension and cuts off ties leaving flush edges
- Flame retardant and non-toxic for applications where safety from fire is critical

CERTIFICATION

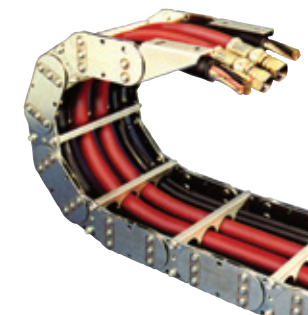
UL Listed



CABLE & HOSE CARRIERS / FESTOONS

POWERTRAK

PowerTrak drag cable/hose carriers with rugged steel side chains and aluminum or steel carrier bars are ideal for harsh environments and high-speed operation. Unique nylon disks placed between the links reduce friction and operating noise coupled with Links made of high-strength, low-alloy steel that employ a 2:2 double link design for maximum strength. PowerTrak Drag Chains are designed with the most demanding industrial applications and harsh environments in mind, with available track sizes to handle cables as large as 7.73" in diameter.



FEATURES

- 2:2 Flat Link Design
- Retaining Ring Fasteners / Bolted Construction
- High Strength, Low Alloy Steel or Stainless Steel (304/316) Construction
- Anti-Friction Discs
- Multiple Carrier Types / custom to fit your cable and hose package
- Full Range of Sizes up to 30 inch tall side links
- Multiple Radii custom to your cable or hose needs
- Variable Widths /also carriage systems for long travels

CABLE & HOSE CARRIERS / FESTOONS

PDQ 450 I-BEAM FESTOON SYSTEM

Rugged, Heavy Duty Trolley Design, Dual Clamp, Flat or Round Cable/Hose, 450lbs, 2.5" dia Wheels



FEATURES

- Trolleys ride on four large diameter hardened steel wheels with oversized sealed ball bearings
- Accepts either flat or round cable/hose
- Dual clamp design (two windows) Rubber compression clamps accommodate a variety of hoses/cables
- Fabricated steel construction—no castings
- Baked polyester finish provides superior protection from corrosive marine environments
- Four steel anti-lift rollers
- Fits three sizes of I-beams: S6 x 12.5, S8 x 18.4, S10 x 25.4
- Choice of three saddle dia. (10.24", 14.12", 18.12") in widths to 30"



CABLE REELS

SHO

Compact, rugged Gleason SHO-101A reels have gained much favor with the scrap handling industry and manufacturers of magnet handling cranes. Designed to fit within the crane boom, it is the answer to magnet cable handling problems. Constructed entirely of steel with a powerful long-life main spring. Precision ball bearings are used throughout. Heavy cross section slip rings and copper-graphite brushes ensure electrical contact. Collector assembly rating - 2 pole, 75 amp, 600 volts.



FEATURES

- Retrieve Capabilities Cable
- 175 feet: 1/0 2/C Type W Cable AWG 600 volt cable
- 300 feet: #10 4/C SOOW Cable AWG 600 volt cable
- 2 styles of spools, Monospiral (single layer) or Random Wrap (Multi-layer)

S SERIES REEL



FEATURES

- Easily removable slip ring enclosure
- Fast, Easy brush replacement
- All-welded steel frame is fabricated from permanent welding fixtures to assure perfect alignment
- Durable, long-lasting, baked polyester finish /Marine Duty Paint also available
- Quick, One Piece Slip Ring Removal

MD & SD REELS



FEATURES

- The MMD & SM Reels are made for the most harshest environments, like Steel Mills, Mining and Gas & Oil
- The heavy-duty collector assembly, rated at 35, 75, 125 or 200 amps, 600vAC
- The SM Reel Models for 2 to 36 conductors, cable from 30' to 200
- The heavy 3/8" steel plate L-shaped frame and 1/4" thick steel spool disks only in Gleasons SM Reel



We are proud to have the most comprehensive offering of systems-engineered grounding connectors that provide the ultimate in system integrity and have the ability to withstand the harshest of environments. There is virtually no grounding application problem that this diversified line cannot help solve.

GROUNDING & BONDING

BURNDY HYGROUND

HYGROUND® meets the most stringent safety and performance requirements, including OSHA, UL97, UL467 and IEEE 837, and is approved for direct burial. Unlike exothermic methods, HYGROUND® installations do not require a hot work permit. All HYGROUND® connectors can be installed in any type of weather in less than three minutes. The HYGROUND® system is known for its top quality and long-term performance.



FEATURES

- UL certified when used with Burndy compression tool
- Color coated dyes for easy matching of conductors
- Made from high conductivity electrolytic copper
- Internal chamfer at wire entry for smooth installation of the wire
- Inspection window allows for visual verification that the wire has been fully inserted prior to crimping the lug
- Consistent high quality at a low installed cost
- Short/standard length barrel is recommended for installations with limited space requirements

CERTIFICATION

UL467
IEEE 837
IEEE 837 2014 Qualified
UL468A-468B



BURNDY GC-CT

The GC-CT series cable tray clamps are made of tin-plated cast copper alloy and accommodates either one or two conductors and work with either copper or aluminum cable. In addition to a low-profile head with a deep phillips recess. The galvanized steel bolt has a ribbed neck which prevents rotation during installation when installed in a 0.44 diameter hole. The connector is UL Listed for copper conductor.



FEATURES

- UL467 listed for copper conductor
- Suitable for direct burial in concrete or earth
- Accommodates either one or two conductors
- Made from tin-plated cast copper alloy
- Can be used with aluminum or galvanized steel cable tray

CERTIFICATION

UL467
IEEE 837
IEEE 837 2014 Qualified
UL468A-468B



GROUNDING & BONDING

FARGO GC200



FEATURES

- Highly conductive bronze alloy construction
- Provides vibration proof connections
- Standard 1/2" studs provide easy one wrench installation

CERTIFICATION

ANSI C119.4



ANDERSON GTCS



FEATURES

- Highly conductive-bronze alloy construction
- Allows for 90 degree rotation of eyebolt for convenient conductor placement

CERTIFICATION

ANSI c119.4



FARGO GC5000

The Fargo line of bronze VISE type clamps are a general use connector for applications in current transfer, grounding, and bonding.



FEATURES

- Highly conductive bronze alloy construction
- Provides vibration proof connections

CERTIFICATION

ANSI c119.4



INSTALLATION TOOLS

BURNDY PAT 750 T3

Introducing the BURNDY PATRIOT PAT444ST3 Series with all the exceptional features of its PATRIOT predecessor, plus a new ergonomic design and state of the art technology. The TRACK TRACE TRANSMIT intelligence feature provides critical crimping information for all projects small and large. Data collected by the PAT444ST3 provides users a new level of confidence that their BURNDY crimper is performing to specification and enhances the application of the BURNDY Engineered System; an undeniable advantage over all competitive tools.



FEATURES

- New C-Head style for easy access and increased flexibility
- Die-less System with range taking capability
- Fewer crimps, helps lessen operator fatigue
- 355° Head rotation
- Improved ergonomic design with more balance
- Enhanced grip to reduce user fatigue
- Used with P Dies and U Dies with PUADP1 Adapter
- Robust and reliable INFINITY DRIVE transmission
- Patented, high-speed hydraulic pump system
- Conformally Coated PCB protects electronic circuitry to work in severe weather
- Accepts 2.0Ah-6.0Ah Makita batteries
- Bright LED Worklight to illuminate work area
- Red/Green LED to validate output force
- Manual release trigger, allows partial retraction
- Large on/off triggers
- Built-in trigger guard
- Enhanced hand grip area to prevent slippage
- Red/Green LED to validate output force
- Manual release trigger, allows partial retraction
- Large on/off triggers
- Built-in trigger guard
- Enhanced hand grip area to prevent slippage
- Enhanced hand grip area to prevent slippage

CERTIFICATION

UL Listed to UL 486A-486B
Complies with ANSI C119.4



Upstream, midstream and downstream, helical piles and anchors provide strong foundations, that exceed stabilization needs. Our helical piles and anchors are able to bear loads of up to 120,000 pounds per pile and are ideal for a variety of oil & gas applications, including pipe racks and supports, pump jacks, pump skids, separators, compressors and dehydrators.



HELICAL ANCHORS

CHANCE HELICAL ANCHORS LINEMAN GRADE TOOLS

The Chance Helical Anchors are used to add stability to pipes mounted above, below or on the ground's surface. Whether it is across a body of water, through a boggy marsh, or over a vast desert, the Chance helical anchors work hard to give stability and support to your pipeline project.

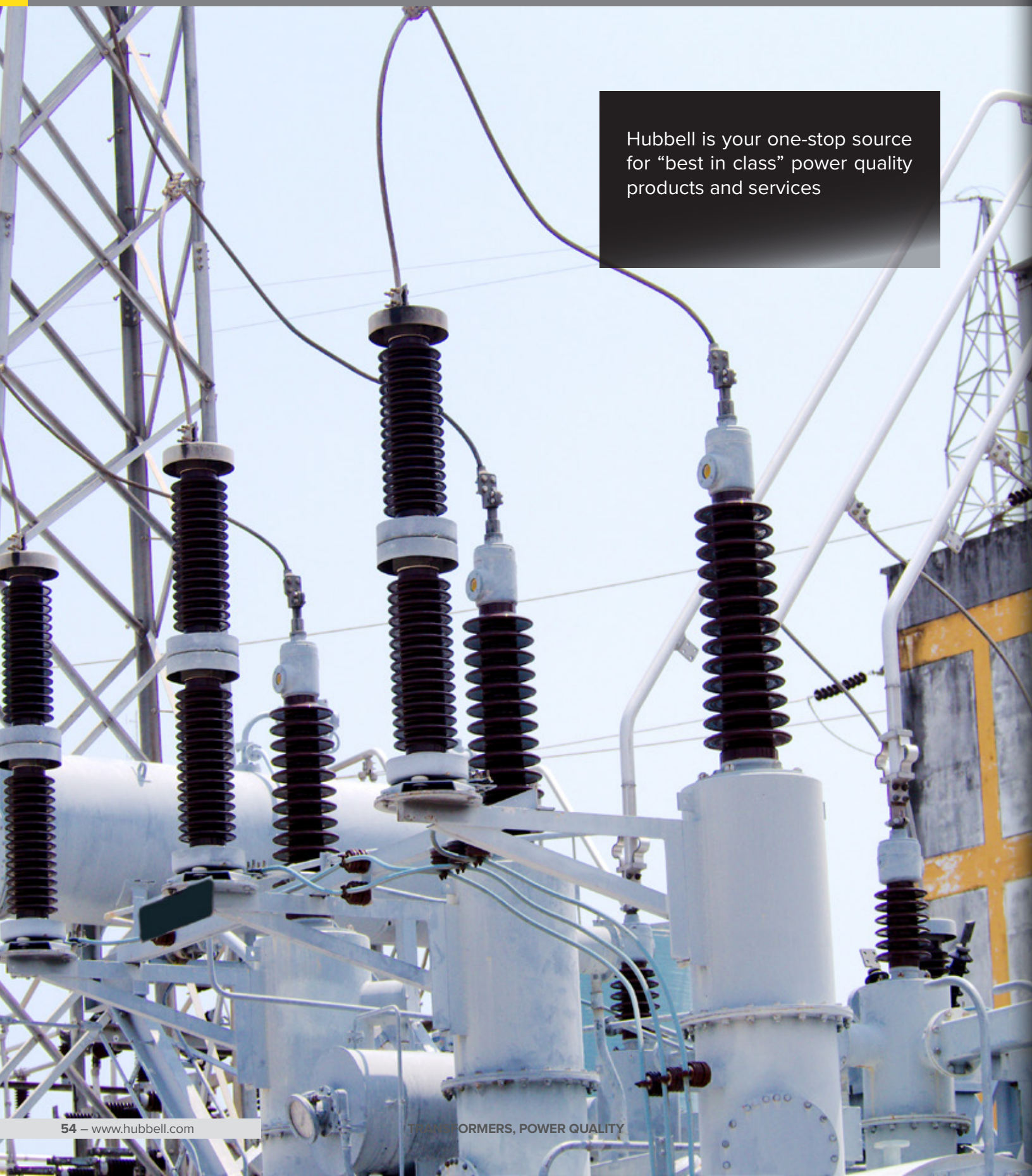


FEATURES

- Speed of Installation
- Immediate loading after installation-i.e. vs. concrete, no curing time
- Low Soil Displacement Foundation Element specifically Designed to Minimize Disturbance During Installation
- Limited Access-Installed with small equipment [low mobilization costs]
- No spoils
- Low impact-no vibration
- Quality control-Field measurable torque

CERTIFICATION ASTM A153





Hubbell is your one-stop source for "best in class" power quality products and services

TRANSFORMERS, POWER QUALITY

Acme Electric PANEL-TRAN ZONE POWER CENTERS

Single Phase, 480 - 120/240V, 5kVA, Snap In Breakers. Zone power centers combine an Acme encapsulated distribution transformer with a power panel assembly in one convenient UL-3R enclosure.



FEATURES

- Fully compliant with NEC 450-3
- Designed for indoor and outdoor applications
- Electrostatic shield for enhanced protection
- Primary and Secondary main circuit breakers provided

CERTIFICATION

CSA Standard C22.2 No 47
Nema Rating NEMA 3R
UL Standard UL 1062



Acme Electric MEDIUM VOLTAGE DISTRIBUTION TRANSFORMER

Three Phase, 4160 - 480Y//277V, 750kVA. Medium voltage dry-type transformers are used to step down incoming high voltage power to utilization voltages for use in industrial applications.



FEATURES

- Lower operating cost over liquid-filled
- No additional fireproofing or venting
- Long life expectancy
- Smaller, lighter easy to maintain

CERTIFICATION

DOE 2016 Energy Efficiency Standards U.S. DOE 10 CFR Part 431 Subpart K, and Canadian Energy Efficiency Regulations SOR/94-651
UL Listed
All units are cUL Listed per UL-1562 and CSA C22.2 No. 47



TRANSFORMERS, POWER QUALITY

Acme Electric GENERAL PURPOSE DISTRIBUTION TRANSFORMER

Single Phase, 240X480 - 120/240V, 2kVA. Acme offers a large selection of Dry-Type Distribution Transformers. Ranging from 600 Volt and below, in both Single and Three Phase, you're sure to find the right one for your needs.



FEATURES

- Quiet operation with sound levels below NEMA standards
- Electrostatic shield for enhanced protection

CERTIFICATION

CSA Standard C22.2 No. 47
Nema Rating NEMA 3R
UL Standard UL 506



TRANSFORMERS, POWER QUALITY

CONNECTOR MANUFACTURING COMPANY PLATFORMS

Heavy-duty platform; 42 inches wide.



FEATURES

- Two I-beams simply supported between two poles from each end. Various lengths available.
- Type 6061-T6 aluminum alloy extrusion
- Loads equally spaced between poles



Acme Electric BUCK-BOOST TRANSFORMER

Single Phase, 120 X 240 - 12/24V, 500VA. The ideal solution anytime a line voltage change in the 5-15% range is required in single phase or three phase applications.



FEATURES

- Easily configured for numerous applications
- Lower cost solution
- 5-10 times increase in kVA

CERTIFICATION

UL listed, CSA certified and UL 3R enclosure, meets or exceeds all listing criteria, including NEMA, ANSI, and OSHA standards



CONNECTOR MANUFACTURING COMPANY BOLTED TRANSFORMER CLUSTER MOUNT

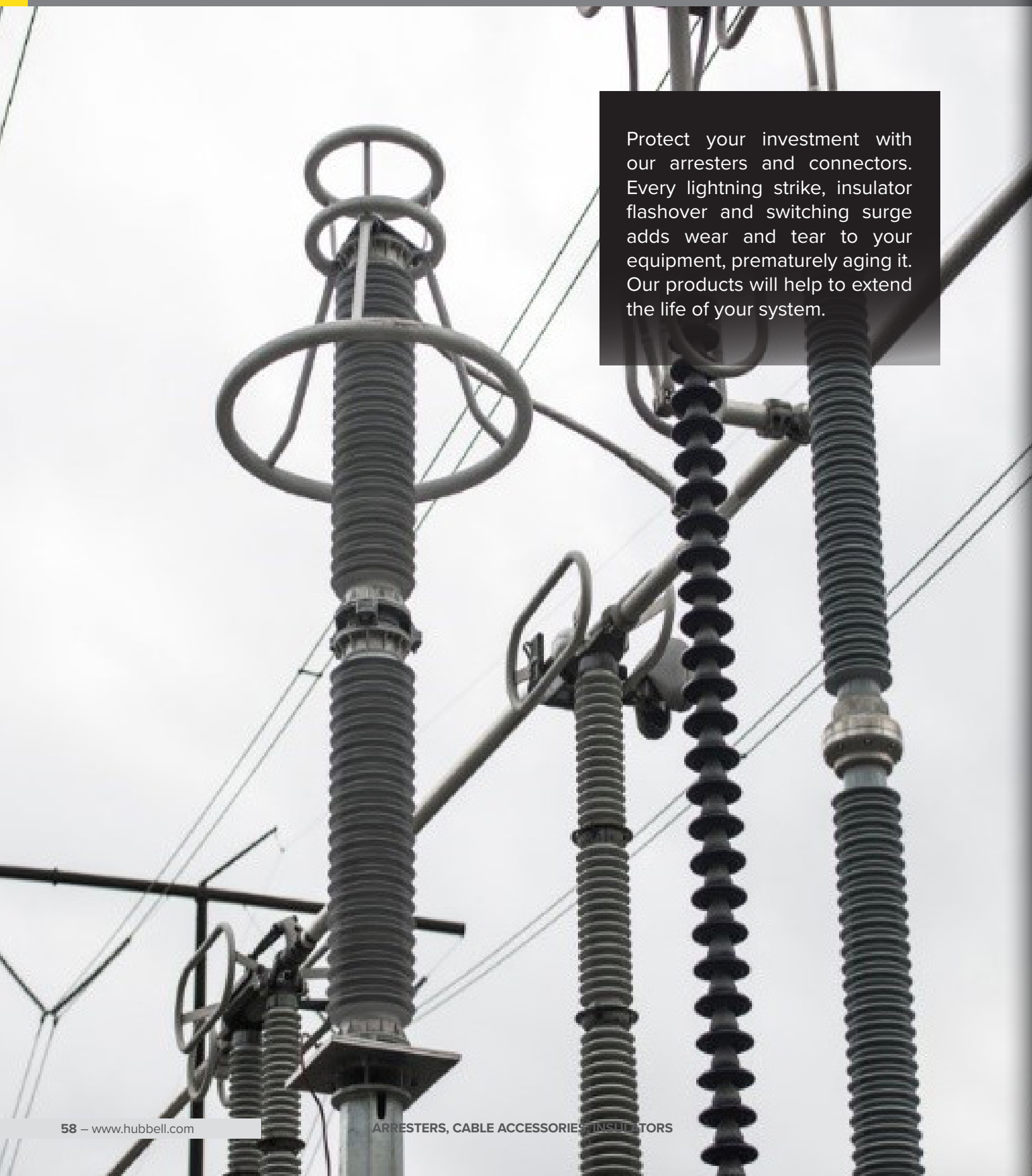
Wing Cluster Mount with hot dipped galvanized mounting hardware. Completely assembled. Lifting eye and A-Bolt pack included.



FEATURES

- Made of high strength extruded 6061-T6 aluminum alloy
- 24" NEMA transformer spacing
- EE-1 NEMA type B lugs
- Comes standard with ground wire clamp





Protect your investment with our arresters and connectors. Every lightning strike, insulator flashover and switching surge adds wear and tear to your equipment, prematurely aging it. Our products will help to extend the life of your system.

ARRESTERS, CABLE ACCESSORIES, INSULATORS

OHIO BRASS PDV-100 OPTIMA

Hubbell introduced the first polymer housed surge arrester in 1986 and continues to be the market leader with a full line of polymer housed arresters for distribution voltages. The PDV-100 Optima arresters meet the Heavy Duty requirements of IEEE C62.11 and the Distribution High requirements of IEC 60099-4. This arrester class is suitable for withstanding a 100 kA high current impulse. An option is available for both Imperial and Metric hardware. Available with wildlife guard.



FEATURES

- Over 30 years of excellent field performance with over 40 million distribution arresters installed
- Long lasting ESP housing material with superior mechanical strength and electrical characteristics
- Reliable capacitive disconnecter operates at fault currents as low as 1 Amp
- Dynamic triple sealing system protects internal components from moisture ingress to extend service lifetime
- High quality MOV discs made in Wadsworth, Ohio since 1978
- Arresters assembled in Aiken, South Carolina
- 100% routine tested

CERTIFICATION

IEEE c62.11
IEC 60099-4



HUBBELL BURNDY MEDIUM VOLTAGE TERMINATION

Cold Shrink cable terminations for single core, 5 kV to 35 kV XLPE and EPR copper tape, drain wire, Unishield® or lead sheathed power cables for the electrical construction market offered in single and three conductor.



FEATURES

- Quick and easy installation. Offering fewest number of steps to install
- All-in-one integrated body incorporating stress control and sealant mastics
- Improved spiral rip core assembly uses smooth edges for simpler installation with less effort. Heat tacked spiral core prevents unraveling during shipping and handling
- Excellent UV Resistance and hydrophobic characteristic
- Silicone rubber body provides excellent track and erosion resistance
- 2 hole lug and stem Connectors rated to 35kV available for packaging in kits

CERTIFICATION

IEEE-48-2009, Class 1 standards
ISO/IEC 17025 standards



ARRESTERS, CABLE ACCESSORIES, INSULATORS

HUBBELL HUBBELL INSULATORS

Hubbell has led the electrical industry in high voltage insulator development for over 100 years with over 40 million distribution insulators sold worldwide and installed insulator experience up to 1100kV. Insulators shown available in silicone or porcelain housings. Hubbell has provided insulators for some of the most important and challenging installations on the power grid.



FEATURES

- Insulators for substation, distribution and transmission
- Products available in polymer, glass and porcelain
- Polymer insulators manufactured using field proven proprietary silicone rubber or durable proprietary ESP™ technology with superior tracking resistance, durability and tear resistance combined with enhanced characteristics of hydrophobicity and UV stability.
- Quadri*sil® polymer insulators meet the critical demands of high voltage transmission applications with patented superior sealing technology at the triple point (rod/rubber/fitting) to provide decades of long-lasting reliable performance.
- World-class ISO 17025 A2LA accredited high voltage test facilities

CERTIFICATION

- ANSI C29 applicable high voltage insulator standards
- CSA applicable high voltage insulator standards
- IEC applicable high voltage insulator standards



ARRESTERS, CABLE ACCESSORIES, INSULATORS

HUBBELL CABLE ACCESSORIES

Hubbell Utility Solutions' Cable Accessories are available in 15kV, 28kV and 35kV; 200A Loadbreak, 600A and 900A Deadbreak applications. Hubbell Separable Connectors are fully shielded, insulated, and submersible products that provide a means to mate or disconnect medium voltage cable to switchgear, transformers, or sectionalizing equipment on power distribution systems.



900A DEADBREAK JUNCTION



FEATURES

- 900A rated
- All copper components
- Uses IEEE Std. 386 Interface 11
- When mated with suitable separable connectors, the junction provides a fully shielded and submersible connection
- Available in 2, 3, or 4 position configurations
- Optional hardware includes adjustable bracket or u-straps for surface mounting
- 100% routine tested

CERTIFICATION

- IEEE Std 386
- IEEE Std 592





Substations serve as the electrical backbone of Oil & Gas refineries. Ensuring reliable sources of electricity are available for critical operations requires protecting substation assets from unplanned outages. Hubbell offers Greenjacket and Reliaguard cover-up brands to solve the issue of wildlife making contact with energized equipment risk points that result in expensive power outages. Refineries can protect against loss of production and US Wildlife fines for endangered species “takes” with Hubbell wildlife mitigation solutions.

WILDLIFE MITIGATION



BRUSHING GUARDS

Transformers are the most common perch point for wildlife. Transformer bushing guards protect endangered species, birds, squirrels, raccoons, snakes, feral cats and other wildlife from contact with energized risk points. The contact risk points on a bushing are typically from a phase to ground contact.



FEATURES

- Based on the 100 years of collective knowledge of the Reliaguard linemen who specialize in wildlife mitigation, designs consider all risk points. A team of CAD designers support our linemen to incorporate features unique to only Reliaguard Bushing Guards.
- Bushing guards are manufactured with a superior latch closure design to ensure the bushing guards stay where they are installed. The latch closure design provides an optimal method of ensuring covers can't be inadvertently dislodged.

GREENJACKET® SUBSTATION COVERS



FEATURES

- Weather resistant
- Highly UV resistant
- Extremely durable
- Flexible
- Dielectric strength of 609 V/mil
- Removable for maintenance and reusable

RELIAGUARD® TERMINATION GUARD



FEATURES

- Reliaguard® Termination Guards are designed to stay in place. Retention of the cover once applied is a critical design feature to be considered.
- Guards can accommodate a wide variety of conductor diameters
- Complete coverage of the bolted connection and compression cable connection

Reliaguard is compliant with specific test requirements of IEEE 1656-2010.



COMMERCIAL AND INDUSTRIAL PRODUCT CATEGORIES

- WIRING DEVICES & ACCESSORIES
- PLUGS & RECEPTACLES
- SWITCHES & DIMMERS
- DATACOM CONNECTIVITY
- PIN & SLEEVE DEVICES
- DRY-TYPE TRANSFORMERS
- RESISTORS
- ELECTRICAL JUNCTION BOXES
- CABLE REELS
- STEEL & PLASTIC ENCLOSURES
- GROUND FAULT DEVICES
- ELECTRICAL MOTOR CONTROLS
- CONTROL TRANSFORMERS
- INDUSTRIAL CONTACTORS



LIGHTING AND CONTROLS PRODUCT CATEGORIES

- CANOPY LIGHTS
- PARKING LOT/PARKING GARAGE FIXTURES
- EMERGENCY LIGHTING/EXIT SIGNS
- LIGHTING COMPONENTS
- ARCHITECTURAL LIGHTING & SCONCES
- OCCUPANCY, DIMMING & DAYLIGHT HARVESTING SENSOR
- DECORATIVE LANDSCAPE FIXTURES
- BOLLARDS
- FLOODLIGHTS & POLES
- SITE & AREA LIGHTING
- RECESSED, SURFACE MOUNTED & TRACK FIXTURES



CONSTRUCTION AND ENERGY PRODUCT CATEGORIES

- ELECTRICAL LUGS
- GROUNDING EQUIPMENT
- MINING COMMUNICATION & CONTROLS
- SPECIALTY LIGHTING
- SAFETY EQUIPMENT
- HAZARDOUS FITTINGS
- INSTALLATION TOOLING
- COMPRESSION CONNECTORS
- CABLE GLANDS & FITTINGS
- WIRE MANAGEMENT



UTILITIES SOLUTIONS PRODUCT CATEGORIES

- ARRESTERS
- GROUNDING & BONDING EQUIPMENT
- INSULATORS
- CURRENT TRANSFORMERS
- SECTIONALIZERS
- OVERHEAD, PAD MOUNTED & CAPACITOR SWITCHES
- ADVANCED METERING INFRASTRUCTURE
- METERS AND EDGE DEVICES
- BUSHINGS
- CUTOUPS & FUSE LINKS
- INSTRUMENT TRANSFORMERS
- CABLE TERMINATIONS & ACCESSORIES
- HELICAL ANCHORS & FOUNDATIONS
- LINEMAN TOOLS, HOSES & GLOVES
- SPLICES, TAPS & CONNECTORS
- POLYMER CONCRETE & FIBERGLASS ENCLOSURES



Hubbell Incorporated
40 Waterview Drive
Shelton, Connecticut 06484
www.hubbell.com